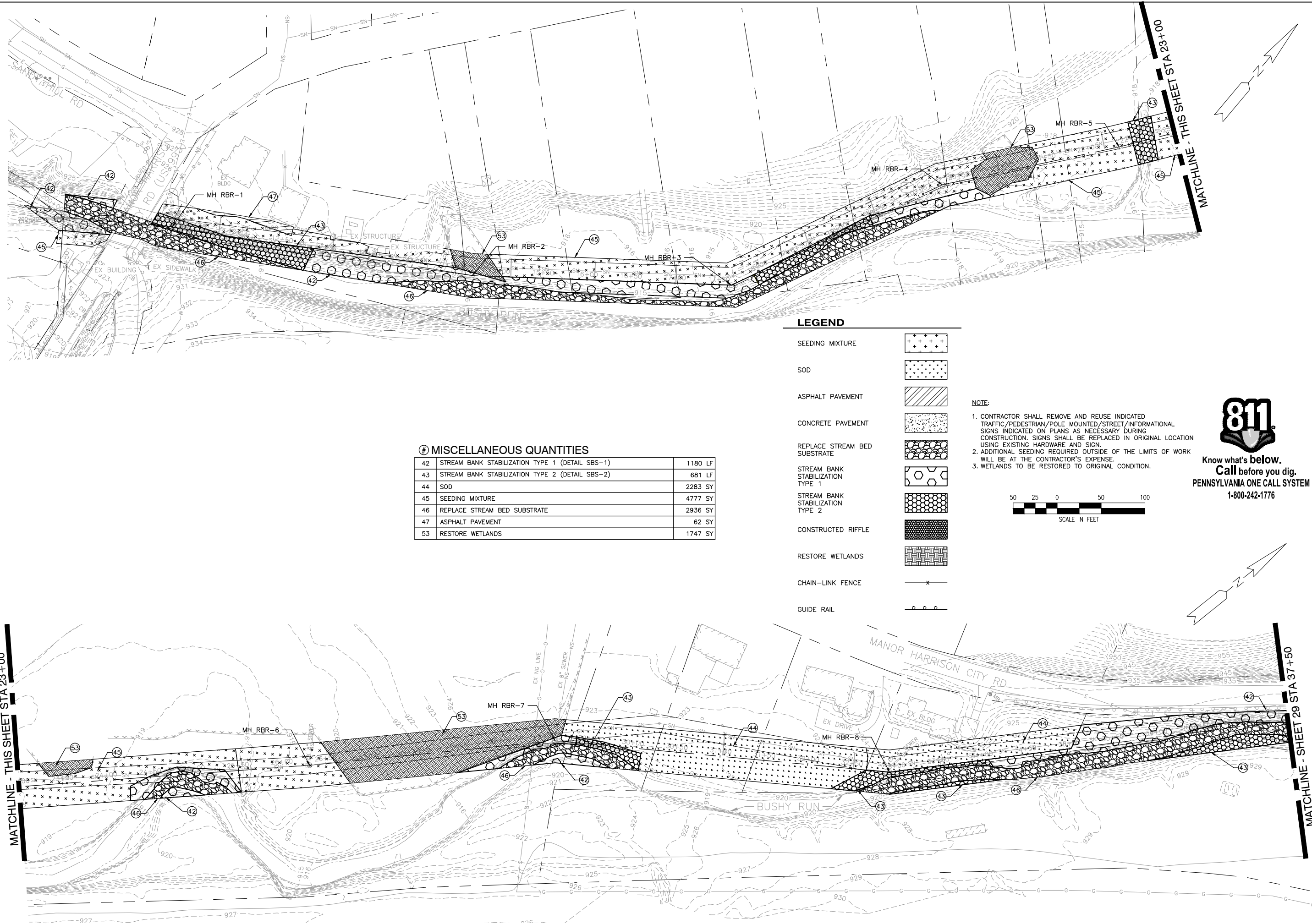


PROJECT MANAGER: BRADLEY BODDY
 C:\PW\MRZ\04-16711\CDP-PLS-BUSHYRUN-RESTORATION.DWG - BR 1 - PLOTTED 11/19/2014 11:50 AM BY: MEDZINECKI, P.E.



Ⓜ MISCELLANEOUS QUANTITIES

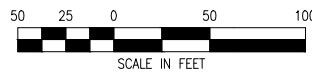
42	STREAM BANK STABILIZATION TYPE 1 (DETAIL SBS-1)	1180 LF
43	STREAM BANK STABILIZATION TYPE 2 (DETAIL SBS-2)	681 LF
44	SOD	2283 SY
45	SEEDING MIXTURE	4777 SY
46	REPLACE STREAM BED SUBSTRATE	2936 SY
47	ASPHALT PAVEMENT	62 SY
53	RESTORE WETLANDS	1747 SY

LEGEND

- SEEDING MIXTURE
- SOD
- ASPHALT PAVEMENT
- CONCRETE PAVEMENT
- REPLACE STREAM BED SUBSTRATE
- STREAM BANK STABILIZATION TYPE 1
- STREAM BANK STABILIZATION TYPE 2
- CONSTRUCTED RIFFLE
- RESTORE WETLANDS
- CHAIN-LINK FENCE
- GUIDE RAIL

NOTE:

1. CONTRACTOR SHALL REMOVE AND REUSE INDICATED TRAFFIC/PEDESTRIAN/POLE MOUNTED/STREET/INFORMATIONAL SIGNS INDICATED ON PLANS AS NECESSARY DURING CONSTRUCTION. SIGNS SHALL BE REPLACED IN ORIGINAL LOCATION USING EXISTING HARDWARE AND SIGN.
2. ADDITIONAL SEEDING REQUIRED OUTSIDE OF THE LIMITS OF WORK WILL BE AT THE CONTRACTOR'S EXPENSE.
3. WETLANDS TO BE RESTORED TO ORIGINAL CONDITION.



**Know what's below.
 Call before you dig.**
 PENNSYLVANIA ONE CALL SYSTEM
 1-800-242-1776

	<p>NOT VALID FOR CONSTRUCTION UNLESS SIGNED AND DATED:</p> <p>WADETRIM 865 Springfield Street, Suite 205 Philadelphia, PA 19122 412-454-5566 FAX: 412-454-5001 <small>Building relationships on a foundation of excellence.</small></p>
<p>WESTERN WESTMORELAND MUNICIPAL AUTHORITY</p> <p>PAVING & RESTORATION PLAN BUSHY RUN</p>	<p>ISSUED FOR: DATE: BY: DEP SUBMIT 11/21/14 BB</p>
<p>JOB NO. WWM2005-01H</p> <p>SHEET 28/52</p>	<p>REV# DATE DESCRIPTION</p>